

Set up Google Home with Google Home APP

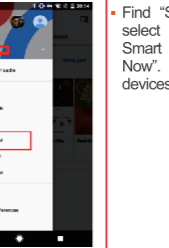
Open the Google Home APP and sign in a Google account. Then connect the Google Home APP with your Google Home device according to the Instruction of Google Home. Choose the Wi-Fi network you want to connect to your Google Home. Then connect it to your Google Home according to the Instruction. Make sure your Google Home APP and Google Home are in the same Wi-Fi network.

11

Link Smart Life account in Home Control

Attention: Due to Google Home APP's known bug, you could use only one Google account to control "Home Control Action". If you sign in Google Home APP with several accounts, only the first account you signed in can be used for "Home Control".

Tap "Home Control" in the hamburger menu on the Google Home App's Home Page, then tap "+".



12

Find "Smart Life" in the list. In the new window, select your Smart Life account region, type your Smart Life account and password, then tap "Link Now". After you assign rooms for devices, your devices will be listed in the Home Control page.

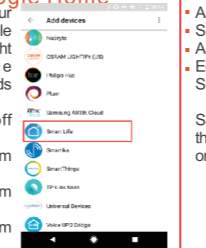
Now you can control your smart device through Google Home. Take bedroom light as the example, the supported voice commands are as below:

Ok Google, turn on/off bedroom light.

Ok Google, set bedroom light to 50 percent.

Ok Google, brighten/dim bedroom light.

Ok Google, set bedroom light to red.



14

Quick Guide of Using Amazon Echo Preparation

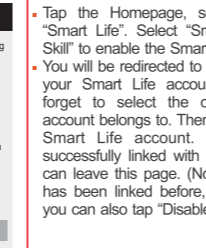
- Amazon Alexa APP and account.
- Smart Life APP and account.
- An Echo device, including Echo, Echo Dot and Echo Tap.
- Echo Tap. Smart device.

Sign in with Smart Life account, add the device, then change the name to a easily recognized word or phrase, like "bedroom light".

15

Set up Echo with Amazon Alexa APP

Sign in with Amazon account. Tap the Homepage on the top left, tap "Settings" and "Set up a new device". Then follow the instructions. Select an Echo device, long press the dot button on the device until the orange light shows up and tap "Continue". Then select your Wi-Fi network and connect it to your device according to the instructions. This may take several minutes.



16

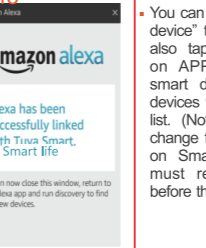
Enable our skill in Alexa APP

- Tap the Homepage, select "Skills", then search "Smart Life". Select "Smart Life" and tap "Enable Skill" to enable the Smart Life Skill.
- You will be redirected to the account link page. Type your Smart Life account and password, do not forget to select the country/region where your account belongs to. Then tap "Link Now" to link your Smart Life account. When "Alexa has been successfully linked with Smart Life" shows up, you can leave this page. (Note: If a Smart Life account has been linked before, you can use it directly, or you can also tap "Disable Skills" to remove it).

17

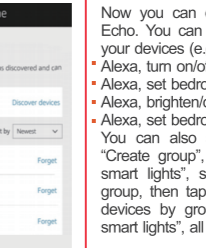
Control your smart device through Echo

- Echo need to discover your smart device before the control.



18

- You can say "Alexa, discover device" to Echo, or you can also tap "Discover Device" on APP to discover the smart devices. Discovered devices will be shown in the list. (Note: Every time you change the name of devices on Smart Life APP, Echo must re-discover devices before the control.)



19

Now you can control your smart devices through Echo. You can use following commands to control your devices (e.g., bedroom light):

- Alexa, turn on/off bedroom light.
- Alexa, set bedroom light to 50 percent.
- Alexa, brighten/dim bedroom light.
- Alexa, set bedroom light to red.

You can also set up groups in Alexa APP. Tap "Create group", give your group a name like "my smart lights", select devices to add them in this group, then tap "Save". Now you can control your devices by group. If you say "Alexa turn on my smart lights", all the lights will be turned on.

20

Mini Smart Socket Instruction

Download & Registration

Scan the QR code to download "Smart Life" APP. You can also search "Smart Life" in either APP store or Google Play to install the APP. Open the "Smart Life" APP, tap "Register" to register a "Smart Life" account with your phone number or E-mail. Then sign in the APP.



1

Add Devices in Easy Mode(Recommend)

Make sure your smart device is energized and your mobile phone is connected to your Wi-Fi. Long press the power button for more than 5 seconds until the indicator light begin to flash quickly(2 times per second about), this means the device is already for configuration.

Open your "Smart Life" APP, tap " + " on the top right of the APP. Select Device Type, tap "Confirm indicator light rapidly blink". These will automatically fetch the password of the Wi-Fi network your mobile phone connects to. Then tap "Confirm" to connect to the device.

When appears "Successfully added 1 device", it means the connection is complete and your device will be listed in your APP list.

2

Add Devices in AP Mode

If failed in Easy Mode, users could add devices in AP Mode. Long press the power button for more than 5 seconds until the indicator light flash quickly, then long press it for another 5 seconds until the indicator light flash slowly.

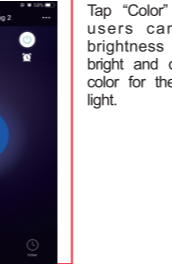
Tap " + " on the top right of the APP, Select Device Type. Then tap "AP Mode" on the top right, "Confirm indicator light slowly blink" and "Confirm". Tap "Connect now" to go to the WLAN Settings interface in your mobile phone and select the Wi-Fi network named "SmartLife_XXXX" to connect it. Return to the "Smart Life" APP, the connection will start automatically.

When appears "Successfully added 1 device", it means the connection is complete.

3

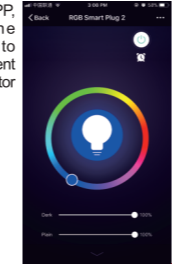
Scene Lights

After you add your device successfully, you will find two switches on your APP. The top right one is for the outlet power, you can tap it to turn on/off the outlet power. And the middle one like a bulb is for the LED indicator light, you can tap it to turn on/off the LED indicator light. You can control them separately via your mobile APP.



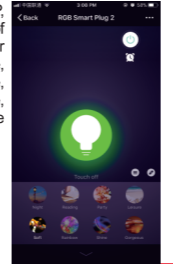
4

Tap "Color" on your APP, users can adjust the brightness from dark to bright and change different color for the LED indicator light.



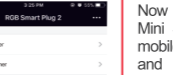
5

Tap "Scene" on your APP, users can set 1 of 8 kinds of mode for the LED indicator light. They are Night Mode, Reading Mode, Part Mode, Leisure Mode, Soft Mode, Rainbow Mode, Shine Mode and Gorgeous Mode.



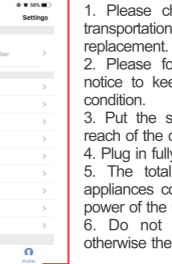
6

Tap "Timer" on your APP, users can add schedule in the list. There are 2 timers in total, one is for the outlet power and the other one is for the LED indicator light. For example, you can create customized schedule to turn the LED indicator light on/off at set times in the day or night.



7

Now you can control your Mini Smart Socket via your mobile phone APP anytime and anywhere (Make sure your mobile phone and Mini Smart Socket are all connected to the network). You can share your devices with your friend or family after you add your devices successfully. More functions you will enjoy refer to the picture.



8

Notices

1. Please check if there is damage caused by transportation, if yes, please contact supplier for replacement.
2. Please follow the specification instruction and notice to keep products in a good and safe use condition.
3. Put the socket in proper condition and out of reach of the children.
4. Plug in fully to the socket while using.
5. The total power of being electric connected appliances could not be bigger than the maximum power of the socket.
6. Do not disassemble or install the socket, otherwise there may cause security risks.

9

Quick Guide of Using Google Home Preparation

- A Google Home device, or an Android phone with Google Assistant.
- Latest Google Home APP (Android only) and a Google account.
- The devise display language must be set to English US.
- Smart Life APP and a related account.
- Smart device.

Sign in with Smart Life account, add the device, then change the name to a easily recognized word or phrase, like "bedroom light".

10